

Existing Building plan for M. B. Patel college, & P. G. Department Education, in Sardar Patel University,

(Sheet No-1)

At:- Vallabh vidya Nagar,

**Schedule :-**

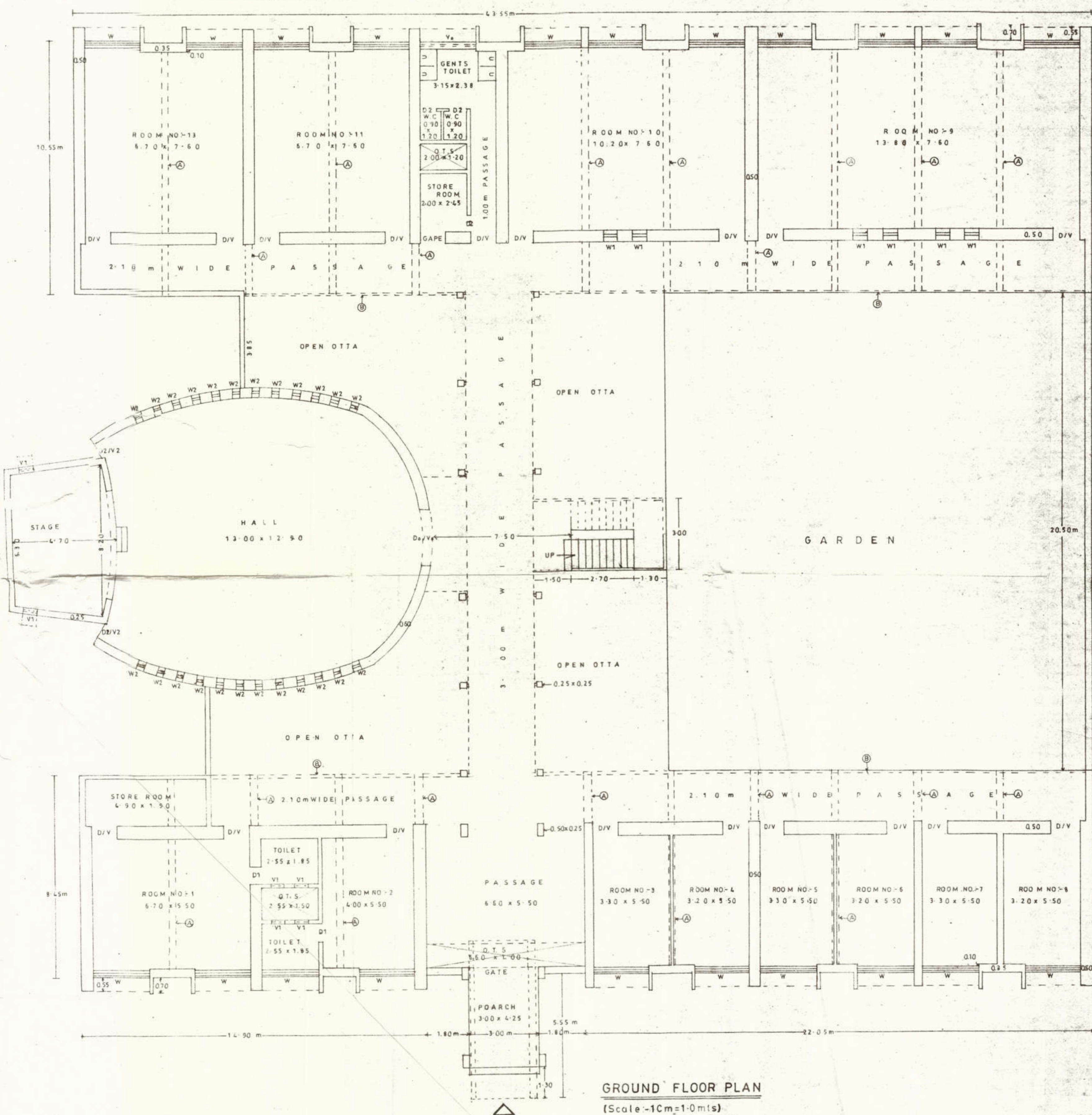
DOOR'S : D	1.10 x 2.10 m	WINDOW'S	W	2.40 x 1.20 m
"	D1	0.75 x 2.10 m	W1	0.60 x 0.60 m
"	D2	0.65 x 2.10 m	VENTILATION	V
			V0	2.40 x 0.60 m
			V1	0.60 x 0.60 m
			V	1.10 x 1.40 m

**Beam of size :-**

A	:- 0.25 x 0.65 m
B	:- 0.12 x 0.65 m

**Note :-**

- (1) SLAB HEIGHT 3.50 m
- (2) LINTEL LEVEL HEIGHT 2.10 m
- (3) SILL LEVEL HEIGHT 0.75 m
- (4) ALL DIMENSINS IN METAR
- (5) ALL LOAD BEARING WALL 0.35, 0.50 TH
- (6) ALL PATISIN WALL 0.15 TH

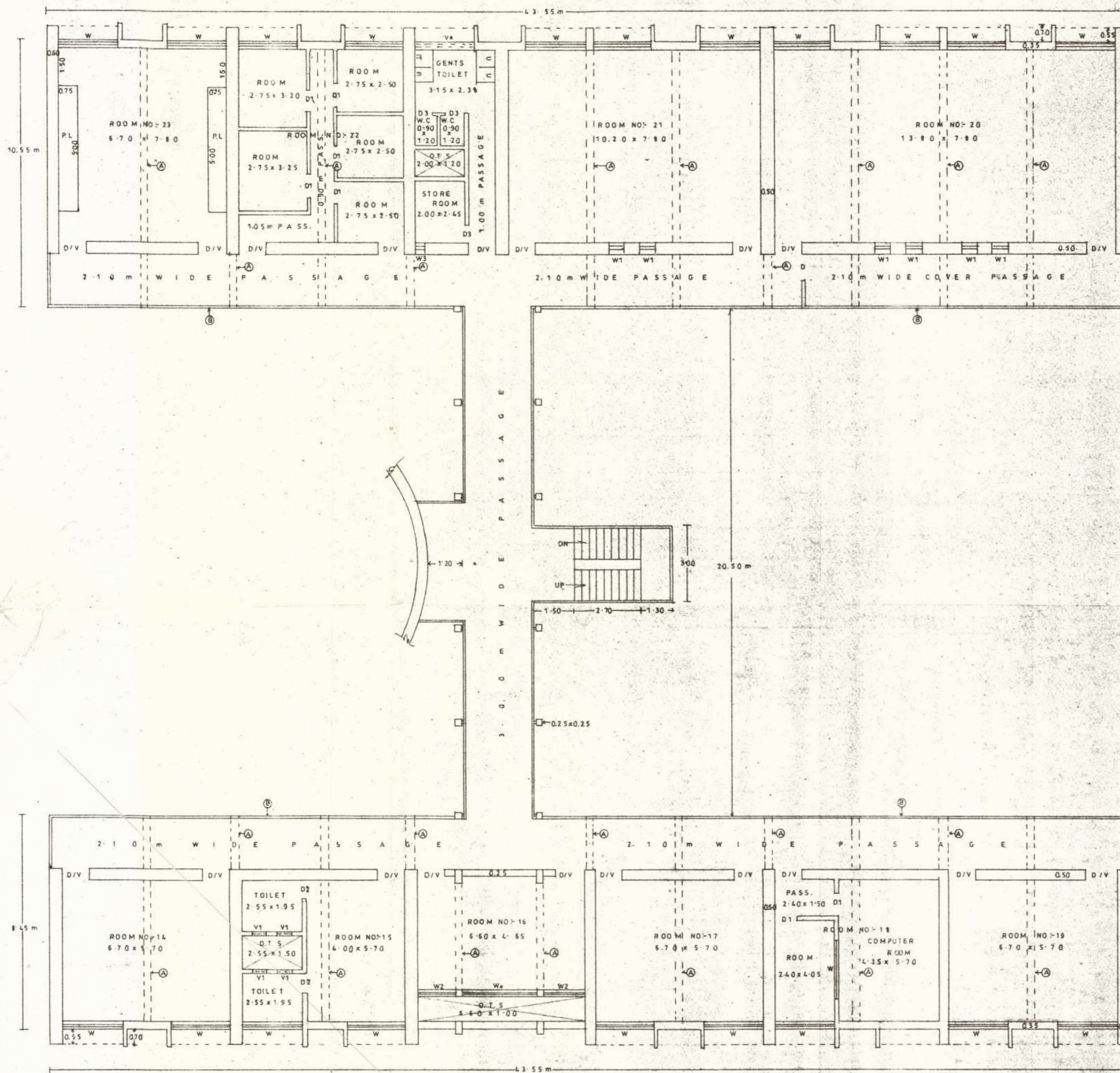


**GROUND FLOOR PLAN**  
(Scale :- 1Cm=10mts)



Kacharwalla





**FIRST FLOOR PLAN**  
(Scale:-1Cm=10mts)

Existing Building plan for M. B. Patel college, & P.G. Department Education, in Sardar Patel University,

(Sheet NO-2)

At:- Vallabh vidya Nagar,

**Schedule:-**

DOOR'S	WINDOW'S
D 1.10 x 2.10 m	W- 2.60 x 1.20 m
D1 0.90 x 2.10 m	W- 2.40 x 1.20 m
D2 0.75 x 2.10 m	W1- 0.60 x 0.60 m
D3 0.65 x 2.10 m	W2- 1.75 x 1.20 m
V- 2.40 x 0.60 m	W3 0.30 x 3.50 m
V 1.10 x 1.40 m	
V1 0.60 x 0.60 m	

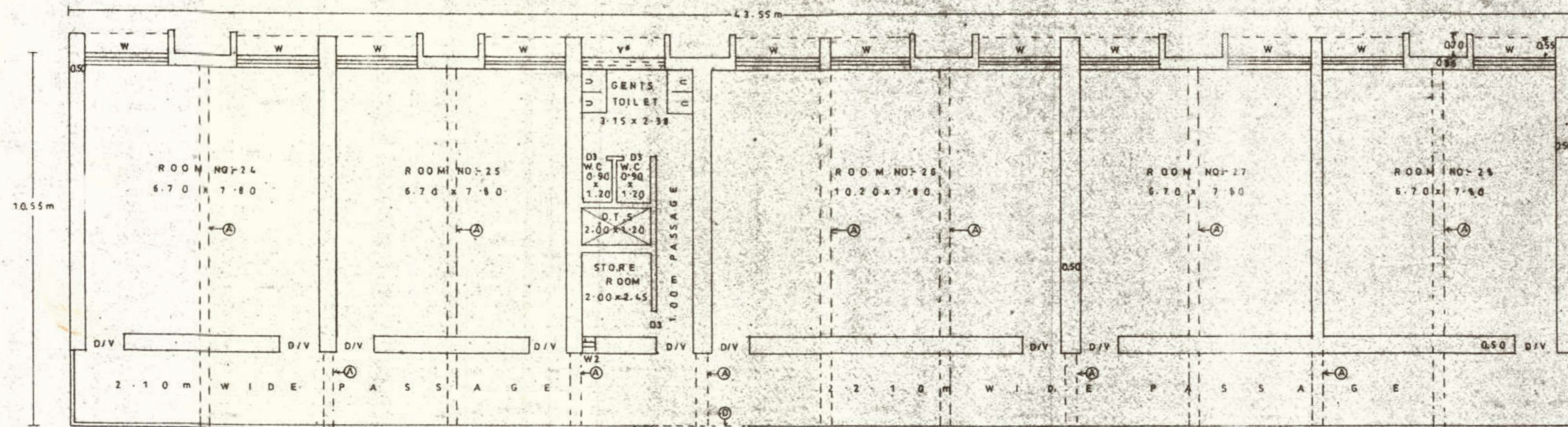
**Beam of size:-**

A	- 0.25 x 0.65 m
B	- 0.12 x 0.65 m

**Note:-**

- (1) SLAB HEIGHT 3.50 m
- (2) LINTEL LEVEL HEIGHT 2.10 m
- (3) SILL LEVEL HEIGHT 1.10 m
- (4) ALL DIMENSINS IN METAR
- (5) ALL LOAD BEARING WALL 0.35, 0.50 TH
- (6) ALL PATISIN WALL 0.15 TH





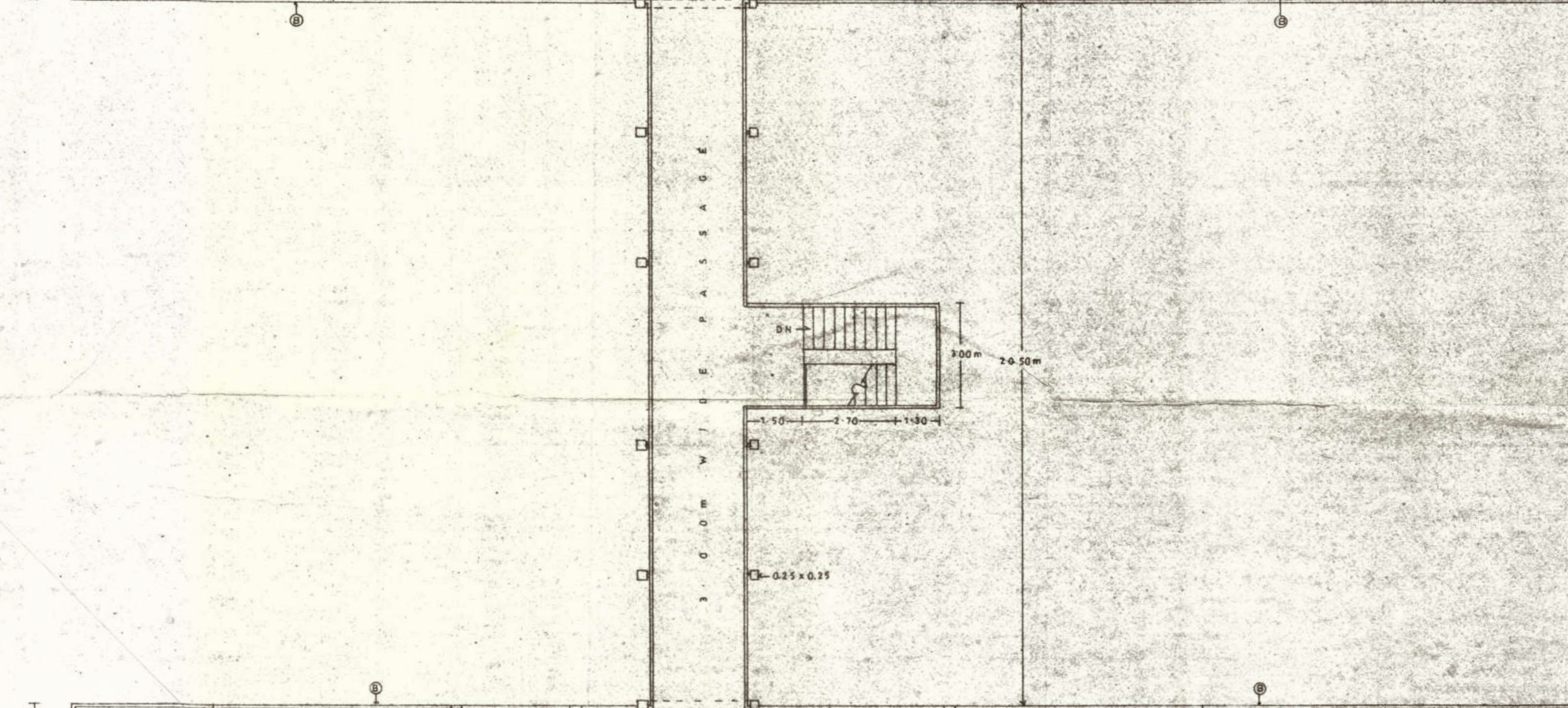
Existing Building plan for M.B. Patel college, & P.G. Department, Education, in Sardar Patel University.  
 At- Vallabh vidya Nagar,  
 (Sheet NO-3)

**Schedule:-**

DOOR'S - D1-1.10 x 2.10 m	WINDOW'S W-2.40 x 1.20 m
" - D2-0.75 x 2.10 m	W <sub>0</sub> -2.60 x 1.20 m
" - D3-0.65 x 2.10 m	W <sub>1</sub> -1.75 x 1.20 m
	VENTILATOR V <sub>0</sub> -2.40 x 0.60 m
	V <sub>1</sub> -0.60 x 0.60 m
	V -1.10 x 1.40 m

**Beam of size :-**  
 A - 0.25 x 0.65 m      C - 0.20 x 0.45 m  
 B - 0.12 x 0.65 m      D - 0.25 x 0.25 m

- Note :-**
- (1) SLAB HEIGHT 3.50 m
  - (2) LINTEL LEVEL HEIGHT 2.10 m
  - (3) SILL LEVEL HEIGHT 1.10 m
  - (4) ALL DIMENSINS IN METAR
  - (5) ALL LOAD BEARING WALL 0.35, 0.50TH
  - (6) ALL PATISIN WALL 0.15TH



**SECOND FLOOR PLAN**  
 (Scale - 1cm=1.0mts.)